

Ryefield Bulletin

In This Issue

Every day at school matters

2026-2027 term dates

Spring term key dates

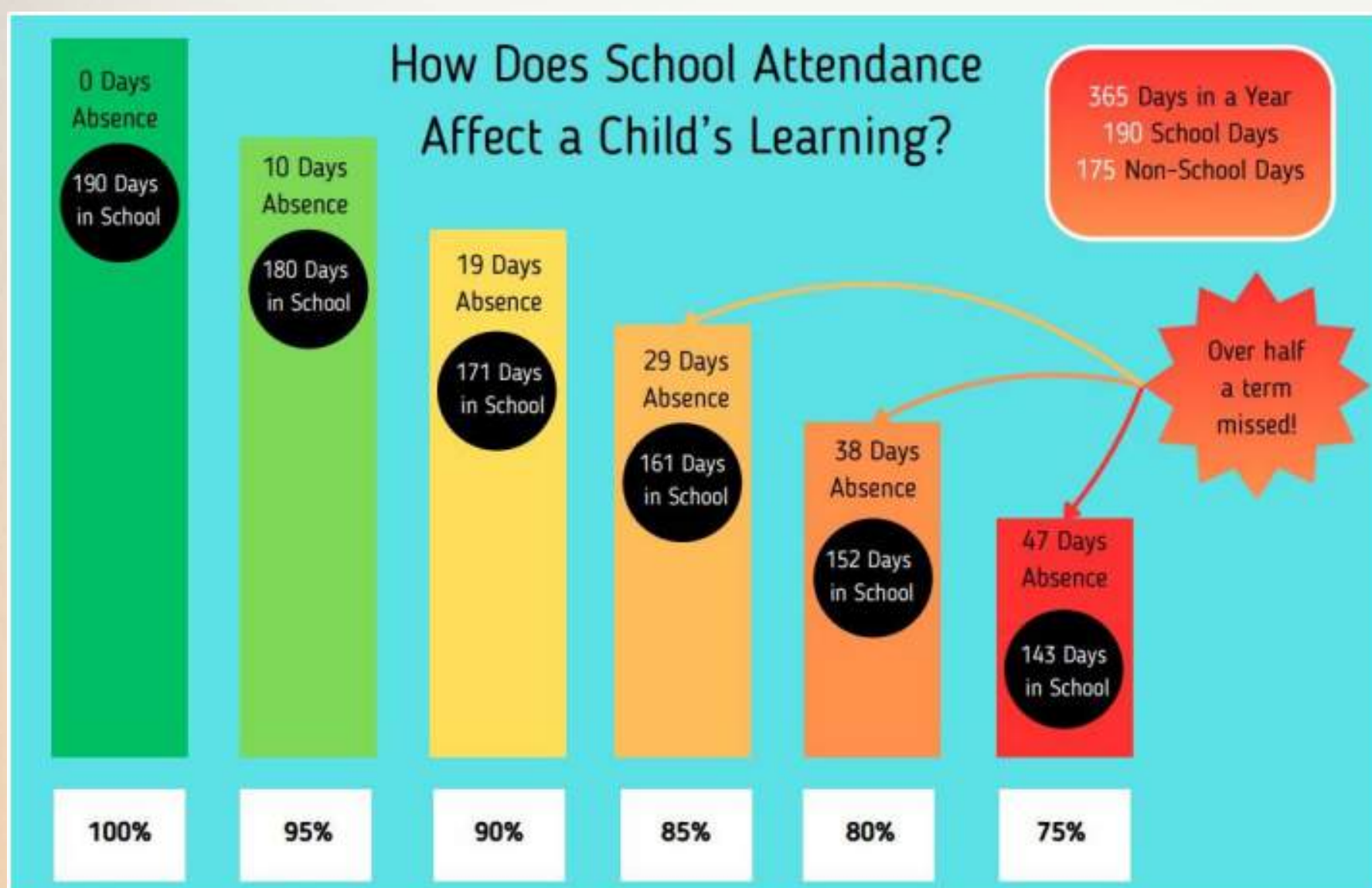
Ryefield Primary School

Ryefield Avenue
Hillingdon
UB10 9DE
01895 547036

Why Every Day at School Matters

Regular school attendance is one of the strongest protective factors in a child’s life. It supports learning, friendships, wellbeing and long-term opportunities. Hillingdon Council and schools across the borough are clear that making sure children receive a full-time, suitable education is a legal responsibility and a safeguarding priority. Where children are persistently absent, this can be an indicator of wider difficulties and, in some cases, educational neglect.

The graph alongside this article shows the powerful link between attendance and learning. Even small amounts of time missed add up quickly. Children with attendance above 95% are far more likely to achieve well, while attendance falling below 90% significantly increases the risk of underachievement. At primary age, persistent attendance at around 75% or lower can halve the chance of reaching the expected standard by the end of Year 6.



Attendance is not just about academic results. Being in school helps us to identify needs early, put support in place, and keep children safe and well. National and local safeguarding guidance highlights that prolonged or repeated absence can be linked to vulnerabilities, including neglect and other safeguarding concerns. This is why we work closely with families, health and local authority services to remove barriers to attendance wherever possible.

We know that every family's circumstances are different. Our first response is always to offer support, listen carefully, and work in partnership to help children attend regularly. However, where a child's attendance becomes extremely low (particularly below 50%) and there are ongoing concerns that their educational needs are not being met, schools are required to involve additional services so that families can receive the right help at the right time.

Thank you for continuing to prioritise attendance and punctuality. Getting children into school every day, on time, gives them the very best chance to thrive – academically, socially and emotionally.

Spring term dates

Friday 16th January: Drama workshop for R, Y1 and Y2, and Junior Citizen Event for Y6.

Wednesday 21st January: VLT Spelling Bee

Week beginning 2nd February: Y4 swimming

Week beginning 9th February: Y4 swimming and VLT Languages week

Friday 13th February: FoR Friendship Disco

Half term: 16th February to the 20th February

Monday 23rd February: School re-opens

Wednesday 4th March: VLT Netball tournament

Thursday 5th March: World Book Day

Friday 6th March: Y6 visit WW2 Bunker

Friday 13th March: Rocksteady to the school

Friday 20th March: Rocksteady to parents (AM and PM performances)

Wednesday 18th March: VLT Science Challenge

Tuesday 24th March: Flower Festival to school, Y5 to Oak Wood

Wednesday 25th March: Flower Festival to parents

Thursday 26th March: Y5 visit the Tower of London

Friday 27th March: Spring term ends.

Easter holiday: 30th March - 9th April

Term dates for the academic year 2026-2027

Autumn term 2026

Staff development day	Tuesday 1st September 2026
Staff development day	Wednesday 2nd September 2026
Start of term	Thursday 3rd September
Half term	26th October - 30th October 2026
Staff development day	Thursday 19th November 2026
Staff development day	Friday 20th November 2026
End of term	Thursday 17th December 2026*

Spring term 2027

Staff development day	Monday 4th January 2027
Staff development day	Tuesday 5th January 2027
Start of term	Wednesday 6th January 2027
Half term	Monday 15th - Friday 19th February 2027
End of term	Thursday 25th March 2027*

Summer term 2027

Start of term	Monday 12th April 2027
May bank holiday	Monday 3rd May 2027
Half term	Monday 31st May - Friday 4th June 2027
Staff development day	Friday 25th June 2027
End of term	Thursday 22nd July 2027*

***Note that the school finishes earlier on the end of term dates. EYFS and KS1 finish at 13:15, whilst KS2 finish at 13:30. There is no afternoon nursery session.**