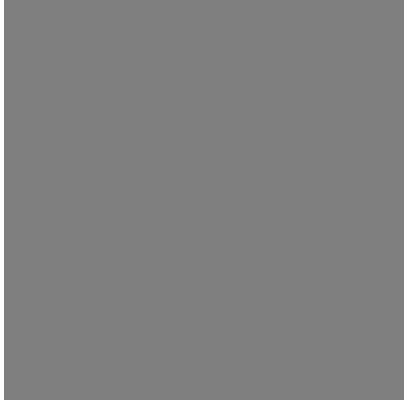


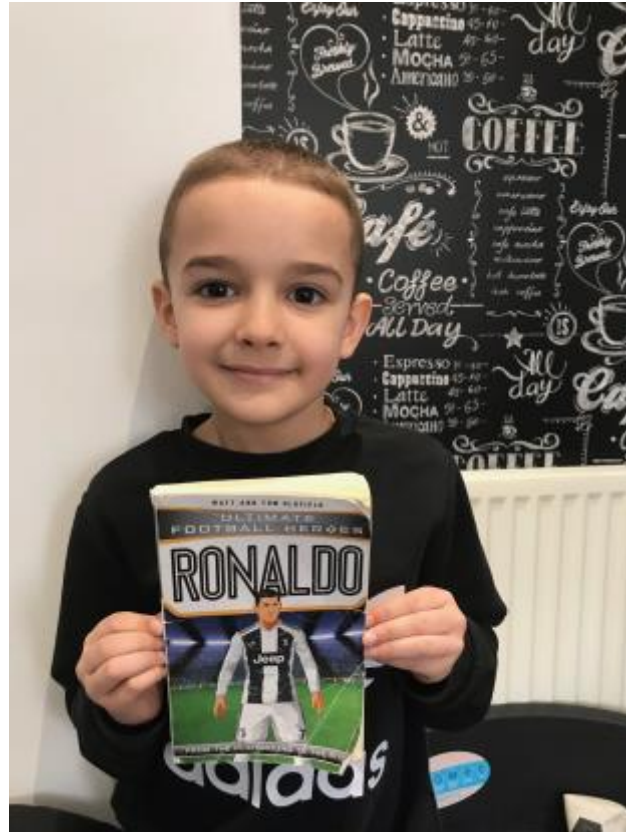
World Book Day

Newsletter 04/03/2021

This newsletter will celebrate World Book Day, provide tips on reading at home. It also includes last week's update of the adjustments that were sent out at the end of the autumn term, and the existing arrangements that are in place to ensure that we can continue to minimise the spread of infection at Ryefield.

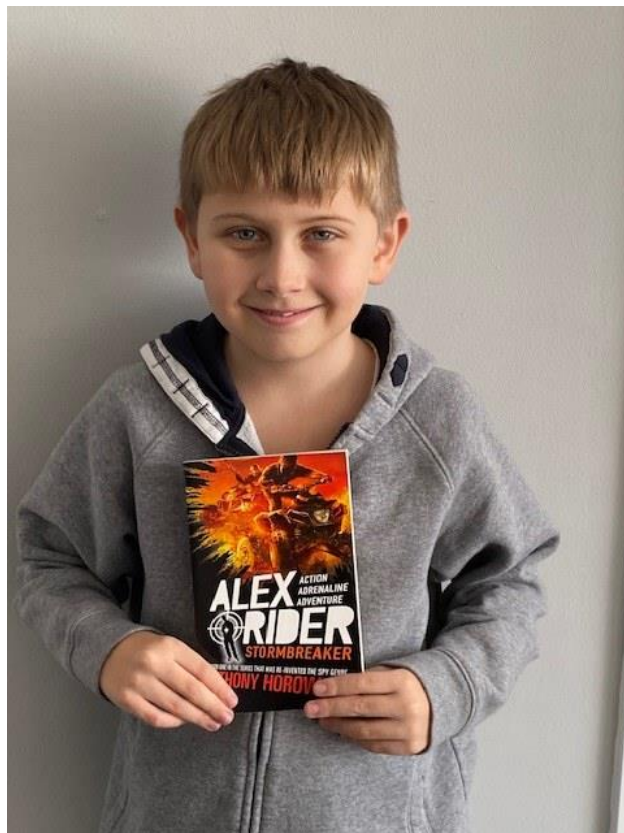
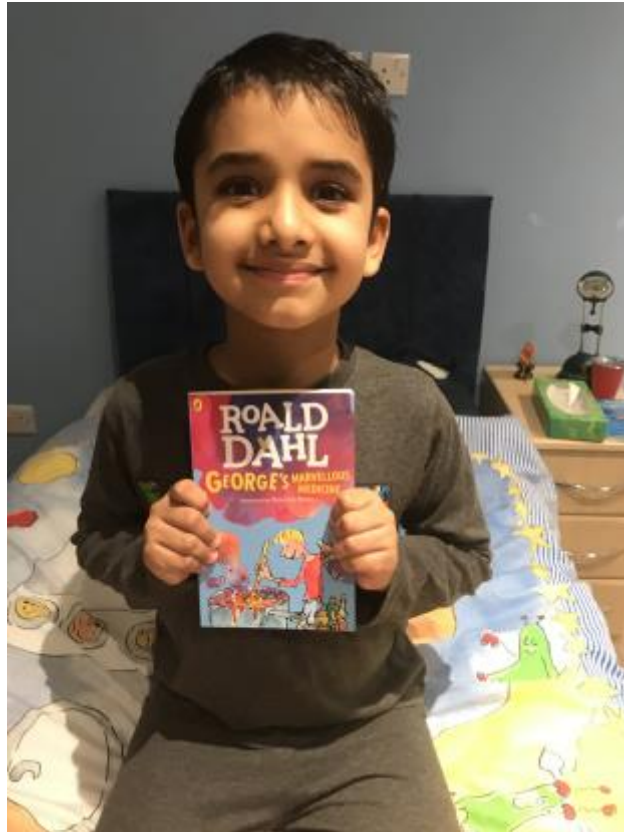


























Masked Reader



To celebrate World Book Day, Ryefield has created its own version of the Masked Reader. We have recorded members of staff from across the school, disguised their voices and hidden their faces. Watch the video and try to name the readers. Can you earn a bonus point for guessing the book they're reading from?

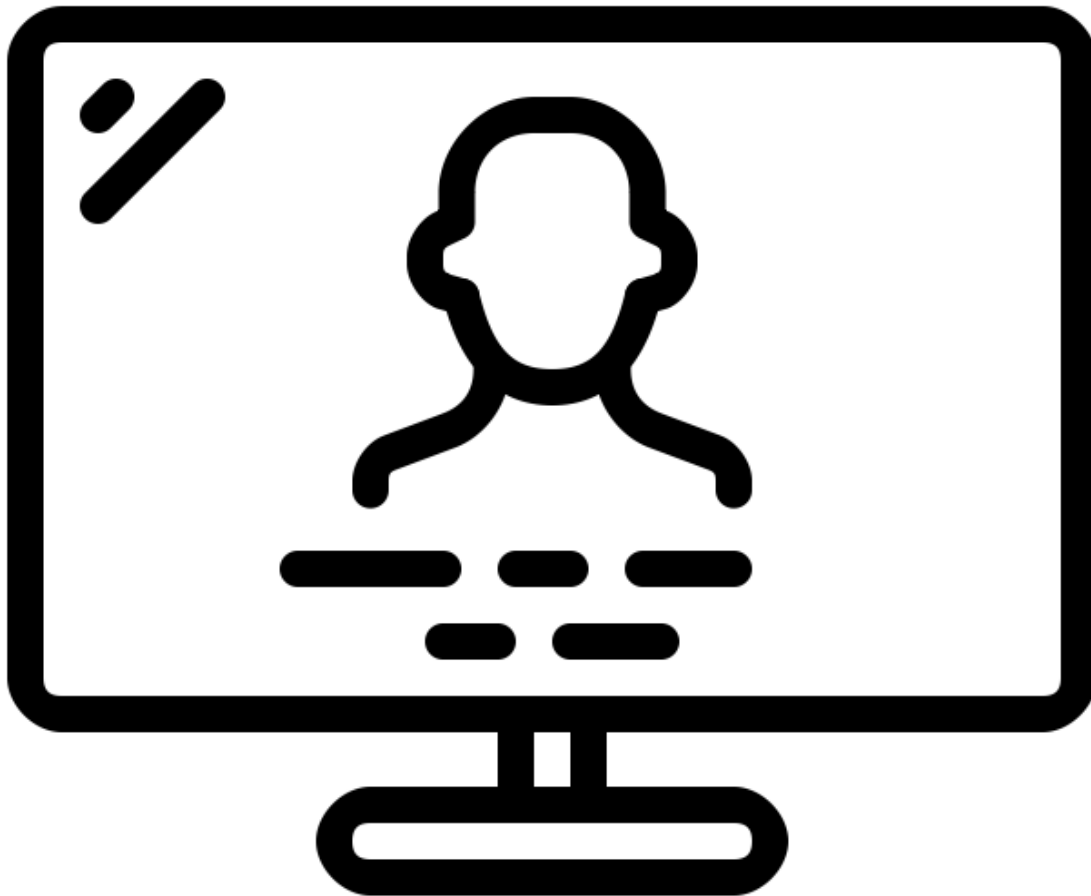
The masked readers are:

- Mrs Thornhill
- Mrs Strong
- Mr Tucker
- Miss Woodbridge
- Miss Lansiquot
- Mr Murray
- Miss Newton
- Mr Brill

- Mrs Dearing
- Mr White
- Miss Perry
- Mrs Hayward
- Mrs Reilly
- Mrs Mander



Subtitles to kick start reading



Turning on the subtitles while children are watching television can double the chances of a child becoming good at reading. It's so brilliantly simple and can help children's literacy so much that we want to shout it from the rooftops! For more information, see www.turnonthesubtitles.org

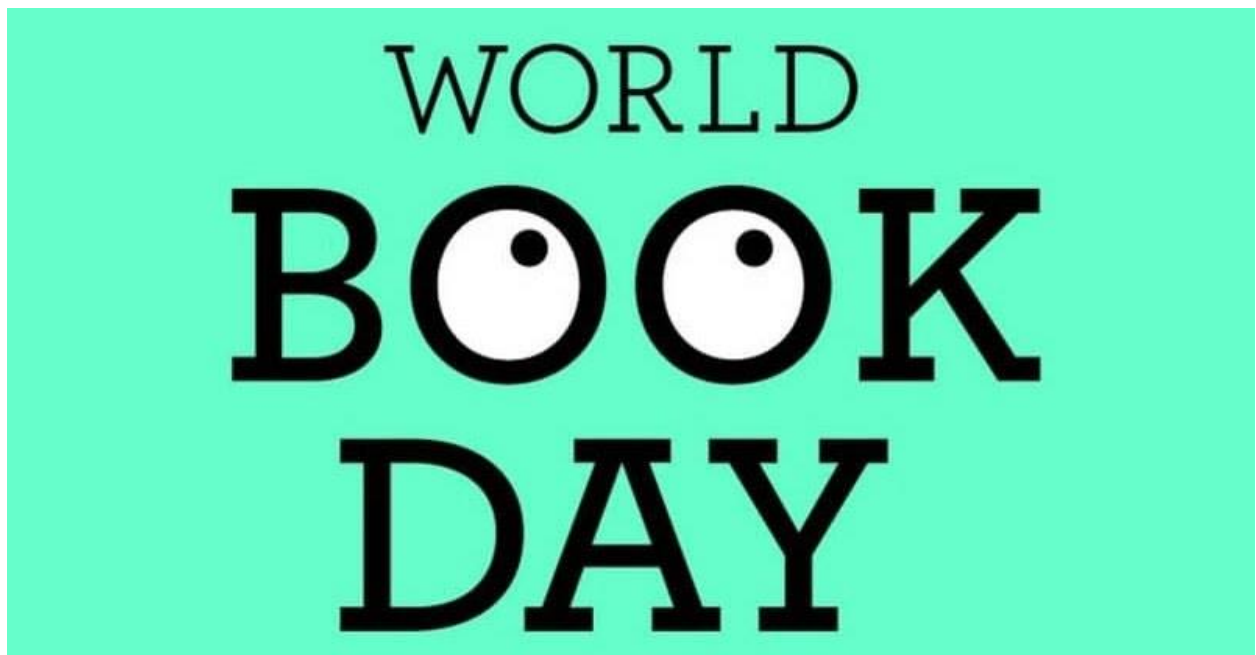
[#TurnOnTheSubtitles](#) - thank you!

Remember students will continue to have access to their e-book library. Password and login details have been sent out via email.

Please contact the office should you have mislaid them.



Click [here](#) to receive your World Book Day voucher.



Reopening guidance.

5 important steps

to help our schools
and childcare settings stay open



**Adults wear a face covering
at drop off/pick up**



**Stick to one adult
at drop off/pick up**



Adults keep 2 metres apart



Avoid car sharing



**Self-isolate if anyone in your
household has symptoms**

**For up to date information, support and advice
visit parentclub.scot**

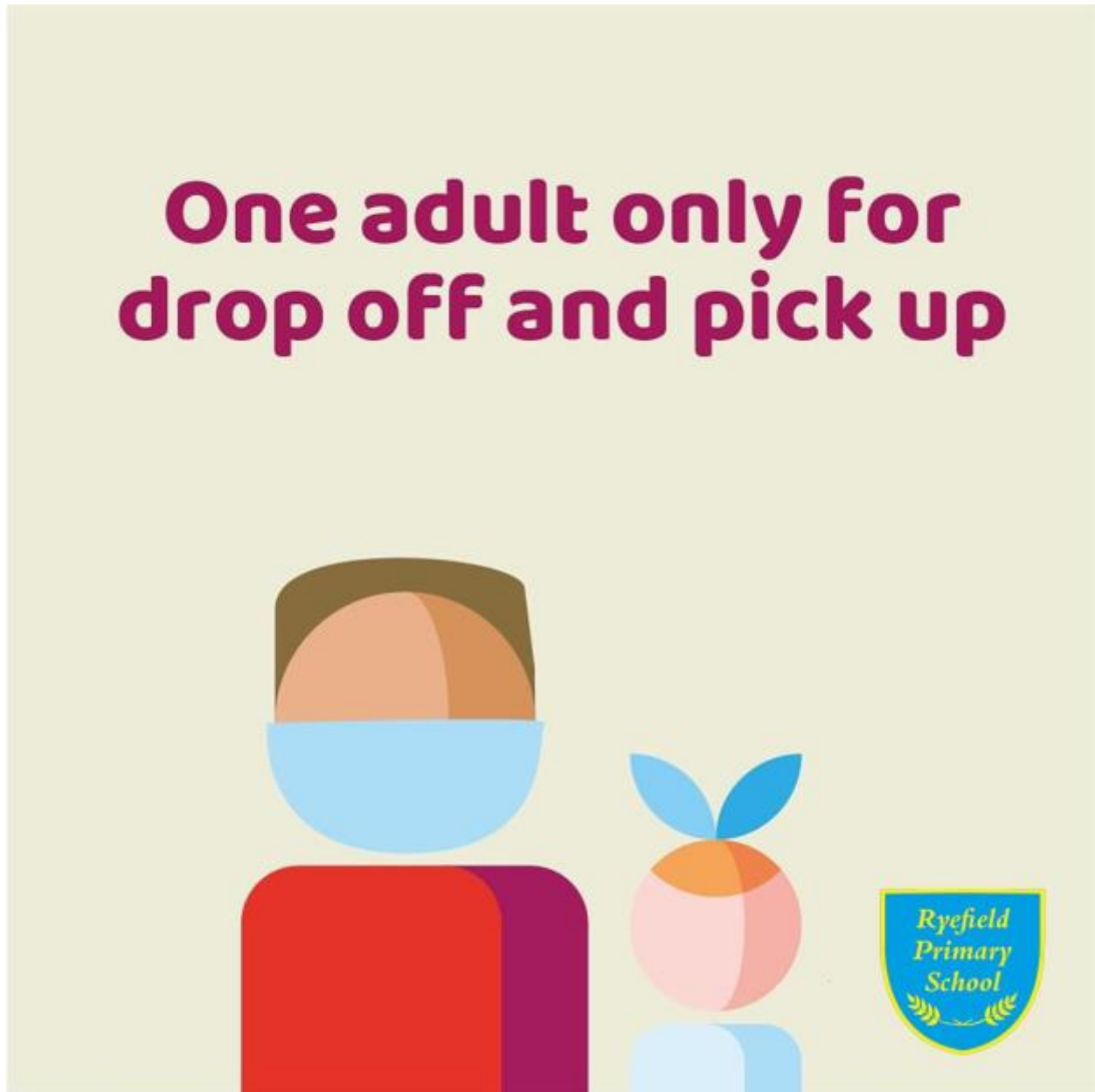
Adults, please wear a face covering when accessing the school site.



During the last consultation, many parents expressed a preference for all adults dropping off or collecting their children to wear a mask. Your child may wish to wear a mask whilst walking to and from school but they will not be wearing them in school, or at breaktimes.

Whilst working across their bubbles, teachers will not be wearing masks. However they may choose to do so if they are travelling around the school.

We need to reduce the number of adults on the school site.



We are fortunate to have a large and spacious site. We encourage families to ensure that as few adults as possible accompany their child to school.

Maintain social distancing.



We realise that many families will not have seen each other for a significant period of time, but we urge all families to remain vigilant and **do not** congregate in groups. This includes keeping a distance from the classroom doors during drop off and pick up. Parents have limited licence to enter the school site. If you wish to speak to your child's class teacher, we ask that you make an appointment via the school office.

If possible, walk to school.

Avoid car sharing and limit use of public transport



We realise that this may not be possible for some families, especially those who travel significant distances to attend Ryefield. However, if you are local please try to avoid car sharing and walk to and from school.

We would also like to remind those parents using public transport that they must wear a face mask.

Self isolate if necessary

Self-isolate if anyone in your household has symptoms



I would like to thank the entire school community for being proactive and acting as the first line of defence. The vaccine rollout continues to give us all the confidence that better times are ahead. We urge all families to continue to monitor their children for symptoms and if necessary self isolate.

Should a class/year group bubble be required to self isolate, remote learning will be provided. This will be in line with the provision offered over the past two months.

Reminders for the 8th March



Timings of the school day will vary for each year bubble:

Nursery am: 08.30 – 11.30

Nursery pm: 12.20 – 15.20

Reception: 08.20 – 14.50

Key Stage 1: 08.20– 14.50

Lower Key Stage 2 (Y3/4): 8.30 – 15.00

Upper Key Stage 2 (Y5/6): 8.30 – 15.10

Lunches

Children can choose to either bring a packed lunch to school, or order a hot meal/sandwich from our school kitchen. The meals are prepared on site and delivered to your child's classroom.

School meals can be purchased via ParentPay.

All children in Reception and KS1 are eligible to receive free school meals via the government's universal infant free school meal programme.

School Uniform

Parents are reminded that from 05 January students are expected to wear their **full** school uniform. The uniform is as follows:

- Boys and girls wear:
- A white polo shirt
- School jumper/cardigan
- Grey trousers, skirt or pinafore
- White socks
- Black formal school shoes (no trainers) In the summer, girls can wear a light summer dress.

In Year 5 & 6 pupils must wear a white shirt with a school tie. Ties can be bought on Parent Pay for £4.10 each, every Friday a member of staff will deliver the ties to the classrooms.

The only exception to this rule will be on the days that your child has P.E. They will be required to come to school in clothing that is suitable for P.E., ideally trainers, tracksuit bottoms, t-shirt and a hoodie or sweater, as your child may well be enjoying outdoor PE in the bracing weather associated with spring.

Your child will need to return to school with a restocked pencil case. Please ensure that you have topped up the necessary materials, which include the following:

- HB pencils,
- **KS2 only:** writing pen (friction pens are best),
- **KS2 only:** an eraser,
- a sharpener,
- highlighter,
- glue stick,
- either colouring pencils or crayola twistables.
- scissors - many children took school scissors home with them. Please replace or return.

We request no that no felt tips are to be brought to school. Currently, the school does not plan to reintroduce large bulky bags. We therefore expect children to continue to use a clear, sturdy, zippable plastic wallet ([click here to see an example](#)) with your child's name written on it.

Laptops:

The school did receive a limited number of devices that were loaned out to families. We will be contacting them in the coming days to detail where they will need to be returned to.

Resources to support children on the return to school

Childline: <https://www.childline.org.uk/info-advice/school-college-and-work/school-college/school/>

Place2Be: <https://www.place2be.org.uk/our-services/services-for-schools/mental-health-resources-for-schools/return-to-school-resources/>

NSPCC <https://www.nspcc.org.uk/keeping-children-safe/away-from-home/at-school/#coronavirus>

Trauma Informed Schools UK https://6282.s3-eu-west-1.amazonaws.com/Recognising_and_responding_to_Anxiety-4+Trauma+Informed+Schools+UK.pdf

After School Clubs



With the exception of Debate Mate, all after school clubs will resume in the Summer term. If you have already paid for one of the following clubs, then your place is secure. Confirmation emails will be sent out in the near future.

Some clubs may still have limited spaces still available. Contact the school office for further information.

Monday:

- Multi-Skills Sport (Yr1 & Yr2)

- Spy Club (Yr2 & Yr3)

Tuesday

- Balance-ability (Level 1 Bikes for R & Yr1)
- Dance (Yr5 & Yr6)

Wednesday

- Multi-sports (Yr 3 & Yr4)
- DebateMate (Yr5 & Yr6)

Thursday

- Football (Yr5 & Yr6)

Friday

- Gymnastics (Yr3 & Yr4)

[Ryefield Rascals](#)



Ryefield Rascals (before and after school club) reopens on Monday 8th March, with an earlier start time of 07:20.

Due to the need for a consistent bubble of children accessing the service, spaces will need to be booked for the week, rather than individual days. We hope to be able to offer more choice in the future.

Places can be secured via ParentPay.

Congratulations Mrs Strong.



I'm sure that all of you will join the school in congratulating Mrs Strong in being appointed the Headteacher of Kew Riverside Primary School.

Over two grueling days, Mrs Strong undertook a range of virtual tasks, delivered an assembly showcasing her burgeoning puppetry skills, and applied her oracy training via face to face presenting to beat off stiff competition. We are delighted that she secured the position, with an approximate start date of late March.

Well done Mrs Strong, we will all be sad to see you go, but hope that you plant a bit of Ryefield in your new school.

Last call for submissions for Moments of Triumph TV



1 - An example from earlier this year.

During the first national lockdown, the school broadcast a weekly video titled 'Moments of Triumph TV'. The video was a collection of clips and photos of any learning, school or otherwise, that your child was proud of and wanted to share with the school community. The regular films were well received and commended by the local authority as an example of excellence.

We have decided to bring it back for Season 2!

Please send any photos or videos, along with a brief explanation, to ryefield.enquiries@ryefieldprimary.org.uk

Make sure that MOTV is clearly displayed in the title of your email.

Remote Learning Section



Ryefield's daily schedule includes three live lessons, with follow up/finishing off tasks to be done after the lesson. Furthermore, we expect pupils to independently do the following:

- *Independent reading (20 minutes a day)*
- *Times Tables practice (20 minutes a day) via [TT Rockstars](#)*

- Spelling practice (20 minutes a day) via [Spelling Shed](#)
- Memorising, researching and mind-mapping the facts on their topic Knowledge Organisers (10 minutes a day)

The school's offer exceeds government recommendations for primaries, in truth it is closer to that of secondary schools!

Protocols for learning



We realise that we are venturing into new and uncharted waters. In order to make this a smooth transition we have some protocols that we would like parents and pupils to follow. We hope that this will iron out potential disruptions to lessons and intrusions to teachers evenings and weekends with their own families.

Parent protocol

- Encourage their child to complete assigned work.
- If your child is absent due to sickness, then parents need to call the attendance line and report your student's absence.
- Within school opening hours, communicate concerns with teachers, related service staff, and/or support staff. **It is unacceptable to contact staff at the weekend or after 16.30.** Staff will respond to email enquiries within 48 hours and within office hours. Persistent offenders will have their accounts suspended. No member of staff is to be contacted via social media.

- Consider appropriate working conditions for your child(ren) to find success throughout the entire school closure period.5. Support your child(ren)'s participation and engagement in Remote Learning each day.
- Supervise younger siblings so that they do not disturb with the live lesson.
- We ask that parents refrain from recording or taking pictures of their children working online or our teachers delivering lessons. We understand and appreciate that parents want to celebrate and highlight their children's accomplishments and those of their teacher(s). Unfortunately, this may result in the unintended consequence of discouraging our staff from participating in synchronous learning due to the level of exposure and, at times, inappropriate comments that are often posted online. Parents who are found to use their child's account to misuse the remote learning platform will find themselves (and their child) being suspended from Google Classroom.

Pupil protocol

- Pupils must log on each day and complete the work set. When they have finished the work, it should be submitted via Google Classroom or the learning platform being used for the lesson.
- Pupils must complete their designated independent tasks within the specified timescale.
- If a pupil needs support, they should contact their teacher through Google Classroom or via email. [48 office hour window for response]
- All communication with teachers and classmates must be polite and respectful.
- Pupils must not comment and access the message board during anti-social hours, e.g. posting comments and sending messages at 23:30, persistent offenders will be muted and may have their account suspended.
- Pupils must be dressed appropriately; pyjamas, dressing gowns and fancy dress are not acceptable. You will be asked to leave the lesson and instructed to change before re-joining.
- Pupils are allowed to drink during live lessons; however they are not permitted to eat.
- **Pupils will behave in the live lessons as they do in class, failure to behave will mean that they will be removed from the lesson.**

How to upload work to Google Classroom

How to upload photos to Google Classroom

When your child has completed the task set by the class teacher. Please take a photo and upload the photo by following these steps. This will 'hand in' the work to the class teacher.

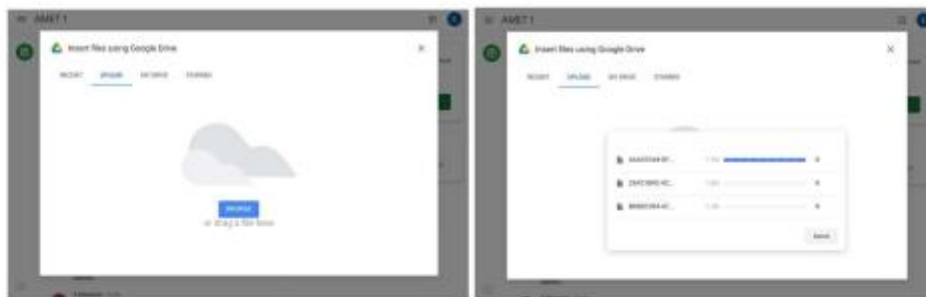
Step 1 – Click Create / Add



Step 2 – Click attach file



Step 3 - Select the file(s) you wish to upload



Step 4 – Hand in the work



And you are done! 😊

[Oak National Academy](#)



Our class teachers use the resources on the Oak National Academy website to support the delivery of our topics. Should you wish to supplement the literacy and numeracy sessions, parents are welcome to follow their published schedule. The sites hosts almost 10,000 free lessons and resources. Made by teachers, for every teacher and every pupil. Your teacher may direct your child to this site for independent learning task.

[Click on the link above to visit the site.](#)

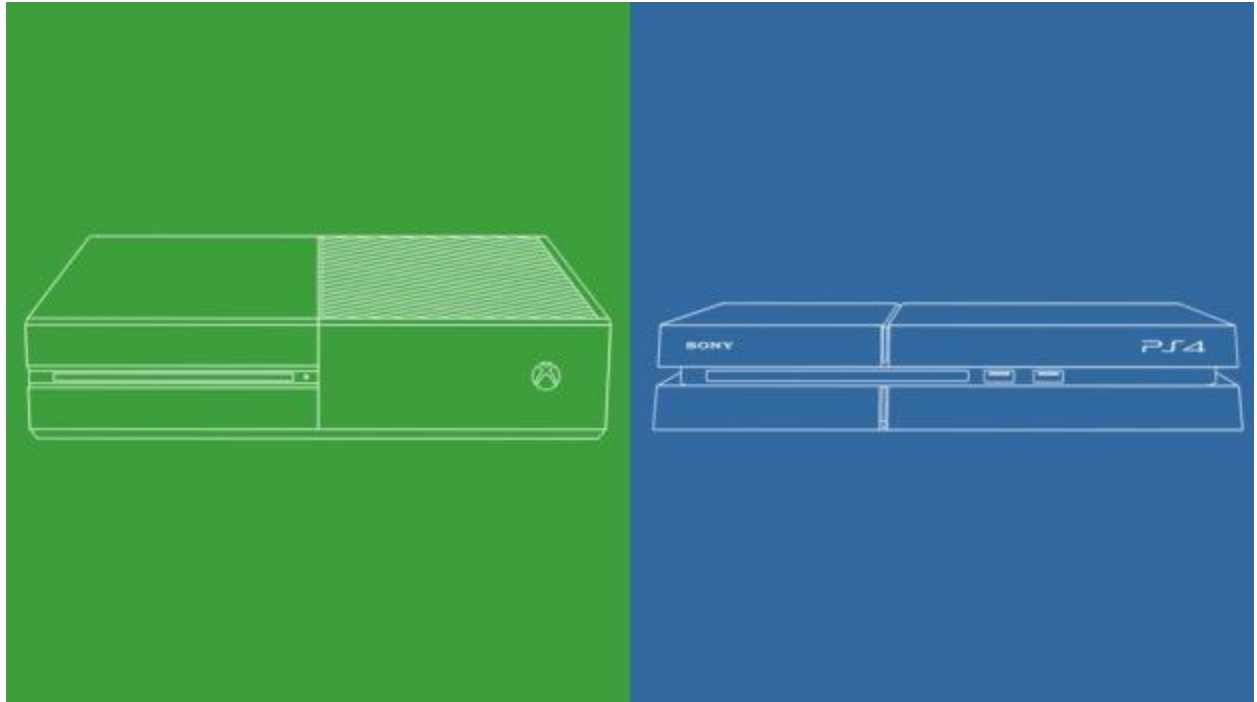
Access Google Classroom with a £29 Amazon Fire Stick

fire tv stick
Basic Edition



[Click here to learn how to access the resources on a Fire Stick.](#)

Access Google Classroom with a PS4 or Xbox One. **11,000 people have accessed our guide!**



[Click here for a link to a guide on how to access all of the resources on a games console.](#)

Nursery

Remote Learning

Nursery W/C 04/01/2021

Here is an outline of the Remote Learning for this week:

Learning Platform	Activity	Done?
Education City	Literacy - How to Build a Snowman	
	Maths - Ten by ten - Count to 10	
	Maths - Count the objects on the Snowman	
	Science - Rain or Shine	
Google Classroom - Where's My Teddy?	Literacy - 'Where's my Teddy?' by Jez Alborough	
	Maths - Counting using 1:1 correspondence	
	Communication & Language - Rhyming Basket	
	Communication & Language - Positional Language Game	
	Expressive Arts & Design - Teddy craft	
Google Classroom - Phonics: Sound Discrimination	Select a different activity each day	
Google Classroom - Additional Materials	Colouring/ Tracing/ design a teddy	
Google Classroom - Daily Story Time	Daily Story Time with Mrs McGee/ Miss Sheppard	

Please upload any photos of activities and work that you complete with your children to google classroom. I would love to see what your children have been learning at home.

These are challenging times for everyone, remember the 'little and often' approach when working with young children. Don't expect children to be able to concentrate for long periods of time and I can't remind you enough that children LEARN THROUGH PLAY. Quality play is so important, make all of the activities as play based as possible, this will engage and excite your child, this way they'll have fun and won't even realise they're learning.

I have included a range of activities, some require more adult involvement than others. It is important to give your child a range of learning experiences throughout the day, some adult directed, some supported and some independent. This variety helps your child's development. You will find things that need lots of direction initially will shift to become more independent activities over time, as this happens, you can increase the challenge and expectations.

These will be posted on Google Classroom at the beginning of each week:

- Recorded Powerpoint of directed tasks - includes Literacy, Maths, CL & EAD activities
- Daily phonics activities - focussing on listening skills/ rhythm/ rhyme/ alliteration
- Activities set on Education City - Literacy, Maths, Science (dependent on theme of the week)
- Colouring Sheets & counting Sheets
- Fine Motor / pencil control sheets (linked to weekly theme)
- Daily Story Time Videos - from Mrs McGee/Miss Sheppard will be posted and a PE activity on a Thursday

Reception

[

Learning Platform	Activity	Done?
Education City	Literacy - Going Spare (matching letters and sounds)	
	Maths - Jack in the Box (recognising numbers to 20)	
	Science- The final snowdown	
Google Classroom	Monday - Literacy - Polar Regions	
	Tuesday - Maths - Ordering Numbers	
	Wednesday - C&L - Environments	
	Thursday - Literacy - Penguins	
	Friday - Maths - Missing Number	
Google Classroom - Phonics: RWI	Daily phonics videos	
Google Classroom - Daily Story Time	Daily Story Time with Miss Cullum, Mrs Simmons, Mrs Drinkwater and Miss Lount	

Please upload any photos of activities and work that you complete with your children to google classroom. We would love to see what your children have been learning at home. These are challenging times for everyone, remember the 'little and often' approach when working with young children.

Don't expect children to be able to concentrate for long periods of time and we can't remind you enough that **children LEARN THROUGH PLAY**. Quality play is so important, make all of the activities as play based as possible, this will engage and excite your child, this way they'll have fun and won't even realise they're learning.

We have included a range of activities, some require more adult involvement than others. It is important to give your child a range of learning experiences throughout the day, some adult directed, some supported and some independent. This variety helps your child's development. You will find things that need lots of direction initially will shift to become more independent activities over time, as this happens, you can increase the challenge and expectations.

If you have any questions or concerns please email us directly:

- hsimmons@ryefieldprimary.org.uk
- adrinkwater@ryefieldprimary.org.uk
- scullum@ryefieldprimary.org.uk

Stay Safe and see you all soon!

Reception Team

Year 1

Year 1 - Live lesson timetable

	9.00 - 9.10am	9.10 - 10.10am	10.10 - 10.30am	10.35 - 10.45am	10.45 - 11.45am	12.00 - 1.00pm	1.00 - 1.15pm	1.15pm onwards
Monday	Log in/ Register	Literacy	Break	Log in/ Register	Maths	Break/Lunchtime	Log in/ Register	Story & directed tasks
Tuesday	Log in/ Register	Literacy		Log in/ Register	Maths		PE - see links on Google Classroom No 'Live lessons'	
Wednesday	Log in/ Register	Literacy		Log in/ Register	Maths		Log in/ Register	Story & directed tasks
Thursday	Log in/ Register	Literacy		Log in/ Register	Maths		Log in/ Register	Story & directed tasks
Friday	Log in/ Register	Literacy		Log in/ Register	Maths		Log in/ Register	Story & directed tasks

Directed tasks - The class teacher will instruct your child to complete an independent task based on either - Science, Geography, History, Art, PSHE etc and this time should also be used to watch the Read Write Inc. (RWI) lesson. The work should then be uploaded to Google Classroom.

* Also available via Google Classroom:- Information for parents. In this area we will add any useful information e.g. 'How to upload photos to Google Classroom' - Useful Resources. This area contains

additional resources to support your child's learning e.g. 'Word mat', 'Number-lines', 'Lined/Squared paper printables'. We will add any extra resources we may think are useful as time progresses.

* Each week there will also be a new Education City task and a new set of spellings on Spelling Shed for your child to learn. This is continuation of the work set each week as homework - before Christmas.

* PE lesson activities can be found under each 'Lockdown week'. They are dated and information is attached within that sub-heading.

Please ensure your child logs in on time and if you are having issues please let us know and we will do our best to assist you. The afternoon sessions will be live for the first half hour or so when the class teacher will read a story and introduce the directed tasks. After they have introduced the task, your child will be required to carry out the tasks themselves.

Year 2

Year 2 - Live lesson timetable

	9.00 - 9.10am	9.10 - 10.10am	10.10 - 10.30am	10.35 - 10.45am	10.45 - 11.45am	12.00 - 1.00pm	1.00 - 1.15pm	1.15pm - 3.00
Monday	Log in/ Register	Literacy	Break	Log in/ Register	Maths	Break/Lunchtime	PE - see links on Google Classroom No 'Live lessons'	
Tuesday	Log in/ Register	Literacy		Log in/ Register	Maths		Log in/ Register	Story & directed tasks
Wednesday	Log in/ Register	Literacy		Log in/ Register	Maths		Log in/ Register	Story & directed tasks
Thursday	Log in/ Register	Literacy		Log in/ Register	Maths		Log in/ Register	Story & directed tasks
Friday	Log in/ Register	Literacy		Log in/ Register	Maths		Log in/ Register	Story & directed tasks

Directed tasks – The class teacher will instruct your child to complete an independent task based on either – Science, Geography, History, Art, PSHE etc and this time should also be used to watch the Read Write Inc. (RWI) phonic lesson. The work should then be uploaded to Google Classroom.

Year 3

Year 3 - Online lesson delivery.

Year 3	9-9.10	9.10 -10.10	Break	10:35	10.45 - 11.45	Lunch	1-1.10	1.10 - 1.35
Mon	Log on and reg	LITERACY		Log on and Reg	Numeracy		Log on and Reg	SCIENCE Story @2.30
Tues		LITERACY			Numeracy			SCIENCE Story @2.30
Wed		LITERACY			Numeracy			PPA - PSHE + P.E via Joe Wicks
Thur		LITERACY			Numeracy			GUIDED READING SPaG Story @2.30
Fri		LITERACY			Numeracy			ART Story @2.30

Please upload photos of any of the work you complete on google classroom.

We will be starting with our Science topic which is Rocks and Soils before moving onto our Geography topic. This should give you time to do any extra research you may wish to do. We will continue to add a few extra resources onto google classroom for you to use and complete if you feel you would like some extra activities to do. There will also be activities on Education City and don't forget keep on top of your tables on TTRS.

Year 4

K52	9-9.10	9.10 -10.10		10:50	11.00 - 12.00		1-1.10	1.10 - 1.35	
Mon	Log on And reg	Mr White delivers LITERACY		Log on And reg	Mr Brill delivers Numeracy		Log on And reg	Mr White reads to Year group And directs pm task. GEOGRAPHY	
Tues	Log on And reg	Mr White delivers LITERACY		Log on And reg	Mr Brill delivers Numeracy		Log on And reg	Mr Brill reads to Year group And directs pm task. SCIENCE	
Wed	Log on And reg	Mr White delivers LITERACY			Mr Brill delivers Numeracy		Log on And reg	Offline learning -Computing Via Education city + P.E via Focus-Fit	
Thur	Log on And reg	Mr White delivers LITERACY			Mr Brill delivers Numeracy		Log on And reg	Mr White reads to Year group And directs pm task. R.E	
Fri	Log on And reg	Mr White delivers LITERACY			Mr Brill delivers Numeracy		Log on And reg	Mr Brill reads to Year group And directs pm task. ART	

Year 4 will teach remotely via Google meet. The links will be posted daily before each lesson starts. We will be using a mix of live flip-charts, PowerPoint, mymaths, Oak academy and education city to facilitate a weekly timetable that closely reflects the one Year 4 undertook whilst at school.

We will post the necessary worksheets for each lesson the day before giving you ample time to find and print. (If you are able). The worksheets we post are to be completed in the 'live' lesson and not prior. The set tasks can be completed on sheets of plain or lined paper and the online sheets used for reference.

Year 5

Year 5 Remote learning timetable – January 2021

Day	9am – 9.10am	9.10am – 10.10am	10.10am – 10.30am	10.35am – 10.45am	10.45am – 11.45am	12pm – 1pm	1pm – 1.15pm	1.15pm	1.30pm Topic – science/History/ Geography
Monday	Log on to Google classroom/google meet & registration	Maths P – Mrs Thornhill F – Mrs Mander	Break	Log on to Google classroom/google meet & registration	Literacy/PoR P – Mrs Thornhill F – Mrs Mander Mrs Hope's group	Lunch	Log on to Google classroom/google meet & registration	Story session & directed task	Topic & directed independent task
Tuesday	Log on to Google classroom/google meet & registration	Maths P – Mrs Thornhill F – Mrs Mander	Break	Log on to Google classroom/google meet & registration	Literacy/PoR P – Mrs Thornhill F – Mrs Mander Mrs Hope's group	Lunch	Log on to Google classroom/google meet & registration	Story session & directed task	Topic & directed independent task
Wednesday	Log on to Google classroom/google meet & registration	Maths P – Mrs Thornhill F – Mrs Mander	Break	Log on to Google classroom/google meet & registration	Literacy/PoR P – Mrs Thornhill F – Mrs Mander Mrs Hope's group	Lunch	Log on to Google classroom/google meet & registration	Story session & directed task	Topic & directed independent task
Thursday	Log on to Google classroom/google meet & registration	Maths P – Mrs Thornhill F – Mrs Mander	Break	Log on to Google classroom/google meet & registration	Literacy/PoR P – Mrs Thornhill F – Mrs Mander Mrs Hope's group	Lunch	Log on to Google classroom/google meet & registration	Story session & directed task	Topic & directed independent task
Friday	Log on to Google classroom/google meet & registration	Maths P – Mrs Thornhill F – Mrs Mander	Break	Log on to Google classroom/google meet & registration	Literacy/PoR P – Mrs Thornhill F – Mrs Mander Mrs Hope's group	Lunch	Log on to Google classroom/google meet & registration	Story session & directed task	Independent work – Joe Wickes (You Tube/PE) Ed City – (Science Content)

Year 5 teachers will be using 'Google Meet' and sending individual classes invites to join for each session, all work will be uploaded on to 'Google classroom'. Children will also be expected to use sites such as My Maths and Education City.

Year 6

Year 6 2020/2021

	9.00 – 10.10	Break	10.45 – 11.55am	Lunch 12.00 – 1.00	1.00- 1.25	1.30
Monday	Literacy		Mathematics		Class Book	Topic/Science
Tuesday	Literacy		Mathematics		Class Book	Topic/Science
Wednesday	Literacy		Mathematics		Class Book	Topic/Science
Thursday	Literacy		Mathematics		Class Book	Topic/Science
Friday	Literacy Vocabulary Spelling Test		Mathematics		Class Book	Topic/Science

Your child will join the English and Maths group that they were set in school. Each group has its own classroom. At the designated time they need to click the link at the top of the classroom and join their teacher and their classmates.

The afternoon session will be based in their registration classes; they should click the link at the top for their class: Curie or Churchill.

[Further learning resources are available from Ryefield Primary School](#)



Click [here](#) to access the online learning resources available on the school's website.